

ENTER THE WEAVE



72nd Revision,
With an introduction by
Weackard Vestrøm, creator
of the WEAVE and founder
of Regional Integration
Solutions, LLC.



A Foreword by Weackard Vestrøm

Creator of the *WEAVE®* and founder of *Regional Integration Solutions, LLC*.

Dear consumer,

If you are reading this, you have just purchased a *WVdevice®*, and are ready to dive into the endless universe of the *WEAVE®*. Congratulations! This is the most successful decision you have ever made in your life.

I originally created the *WEAVE®* as a way to connect advertisers who were willing to pay good money with consumers who were gullible enough to also pay good money while getting nothing in exchange. Over the past few years, however, the *WEAVE®* has grown into a space with actual content to consume, and no one is happier about it than me, Weackard Vestrøm. While I should not claim credit for all of the incredible content that has been created and plotted onto the *WEAVE* by its users, I will. Thanks to me, Weackard Vestrøm, you now have access to dozens of different *WVorbs®*, each populated by dozens of *WVplots®*, almost all acquired at an affordable rate by third party consumers. I encourage you to make the most out of your purchase, and skate to all of the plots you can. This short guide includes information on how to correctly identify your *WVdevice®*, plug to the *WEAVE®*, and efficiently skate to any *WVplot®* using *Regional Integration Solutions, LLC's* state of the art technology, created by me, Weackard Vestrøm.

Soon enough, you might find yourself wanting to create your own *WVplot®* and contribute to the *WVskater* community. Great news! This guide also includes information on purchasing a *WVplot®* from *Regional Integration Solutions, LLC*, and quick tips for developing and sharing your first content bits. The best part: once plotted onto the *WEAVE®*, you will not have to worry about any issues with ownership, since we will take full custody of everything you create. However, neither *Regional Integration Solutions LLC*, nor me, Weackard Vestrøm will be liable for any issues arising from your content. We'll leave that to you. You're welcome!

Happy skating,

Weackard Vestrøm.

Weackard Vestrøm

Creator of *WEAVE*

founder of *Regional Systems Integration, LLC*.



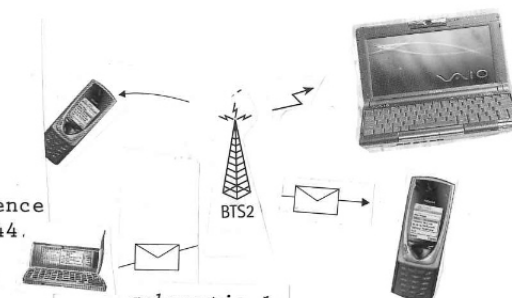
Now everyone uses the

WVdevice®



IDENTIFY YOUR

The *WEAVE®* can be accessed with a diverse set of excellent *WVdevices®*! Before connecting you will need to ensure that you are operating with the correct, and compatible, device from the compatibility list. For your convenience the list was updated in December, 2044. If your device is not on the list please yourself to *WVchat®* and enter the room "*CONSULTANCY*" to arrange a technical upgrade of your equipment.



schematic 1:

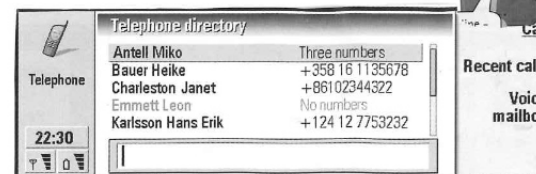
interconnectivity of the *WVdevices*



WVdevice LIST

WVmote 42
WVmote 43-1
WVmote 43-2
WVmote 45-ii
WVmote 46-i
WVmote KIDz

WVdeck 2000-4
WVdeck 2001-2
WVdeck KIDz-3i



Recent calls
Voice mailbox

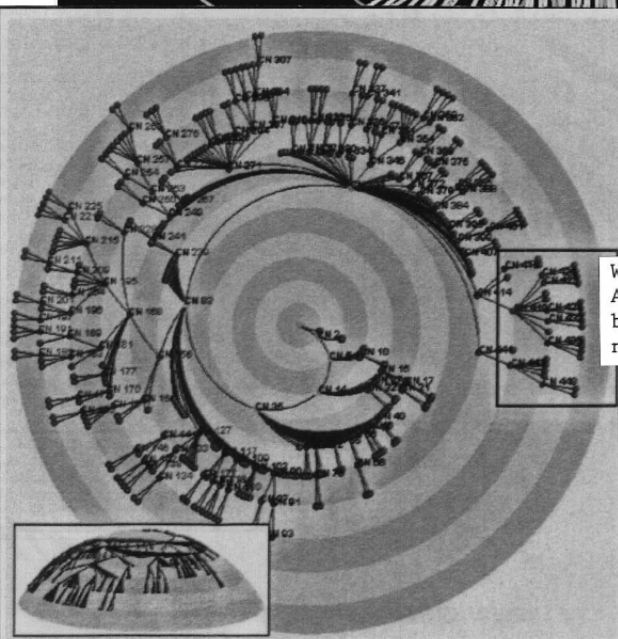
WVpad 1st Ed.
WVpad 1st Ed. Premium.
WVpad 1st Ed. Gloss.
WVpad 1st Ed. Premium Gloss.

Plugging to the WEAVE®

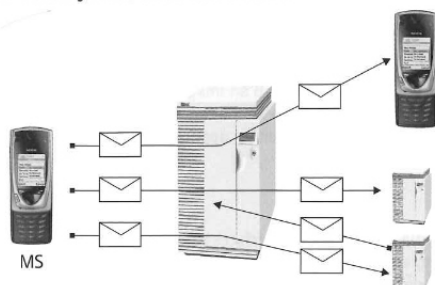
by Slandra Steverenseren

Plugging to the WEAVE® is as easy as knowing the WVorb® you want, typing in the WVway® there, knowing the WVplot® you want, typing in the WVpath® there, and waiting for your WVtech® to chart the floatroad through Regional Integration Solutions, LLC's state of the art cable network system to your plot destination. There are new WVplots® to discover every day!

Remember! always type in the WVloc® in the same order:
WVway:WVpath to access WVorb:WVplot

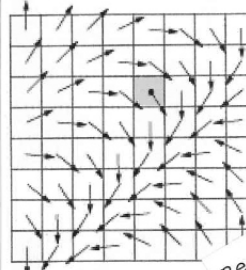
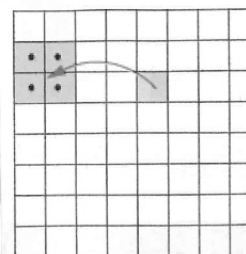
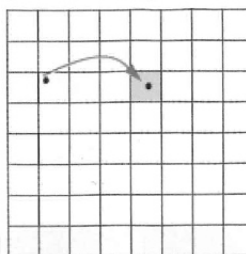


With the new Organizational Emotional Architecture Syntax™ (OEAS) developed by Regional Integration Solutions, LLC, now everyone can be a WVskater!



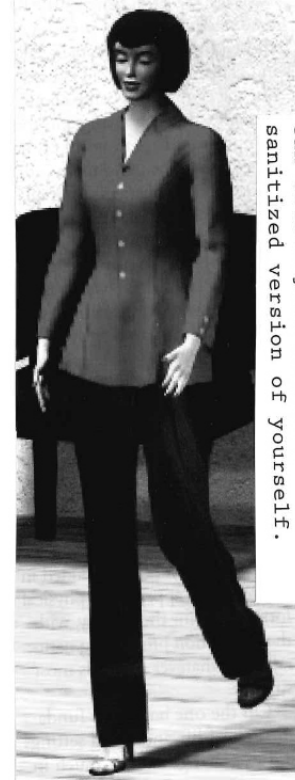
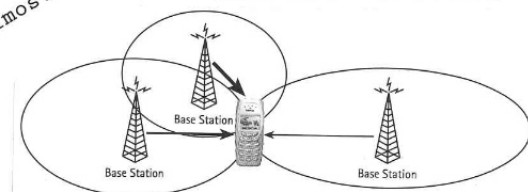
Skating the WEAVE®

By Barandishan Bu

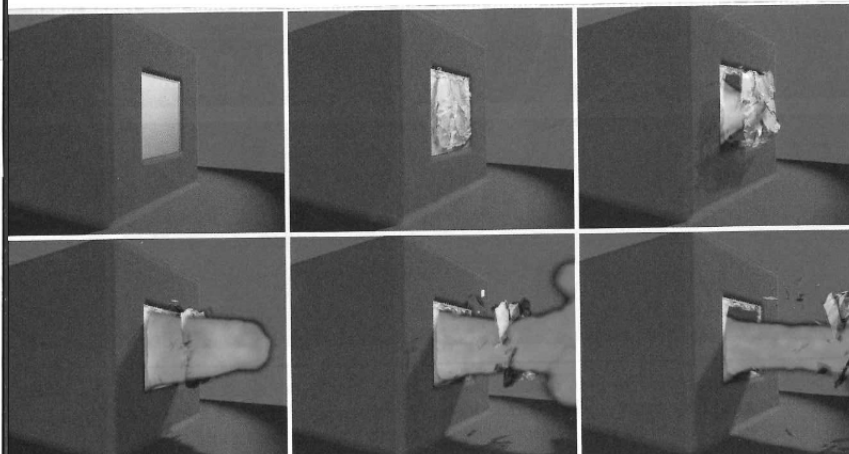


Modern advances to *Regional Integration Solutions LLC's* surveillance have facilitated an enormous increase in speed when skating the WEAVE®. Now, you can access content at walking speed from any point connected to at least three *Regional Integration Solutions LLC* vigilance monitoring centers, conveniently located throughout the globe. You can expand your knowledge of almost any topic, make new friends through dedicated WVorbs® or simply relax and listen to the best curated sounds this side of the Sun.

Regional Integration Solutions LLC vigilance monitoring centers are easily accessible almost anywhere on the globe.



With a convenient avatar, you can create your own fictionalized, sanitized version of yourself.



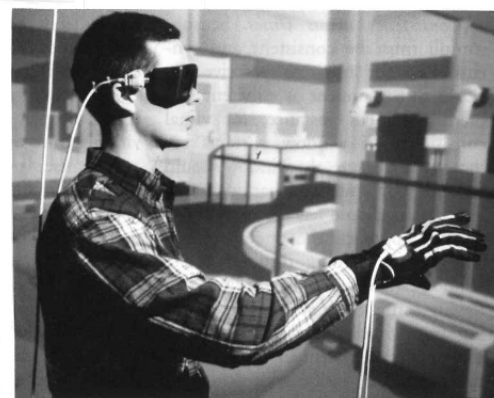
In order to avoid mind-meld explosion, only visit officially licensed and regulated WVorbs®.

Where to Skate: A guide to popular WVorbs®

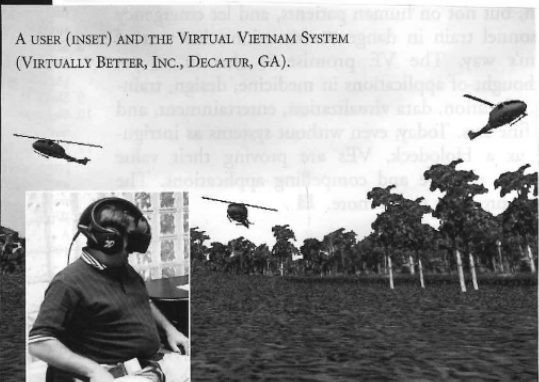
by Andrassandro Malaquivialtesta



The best looks of the season are available for purchase on WVneed.



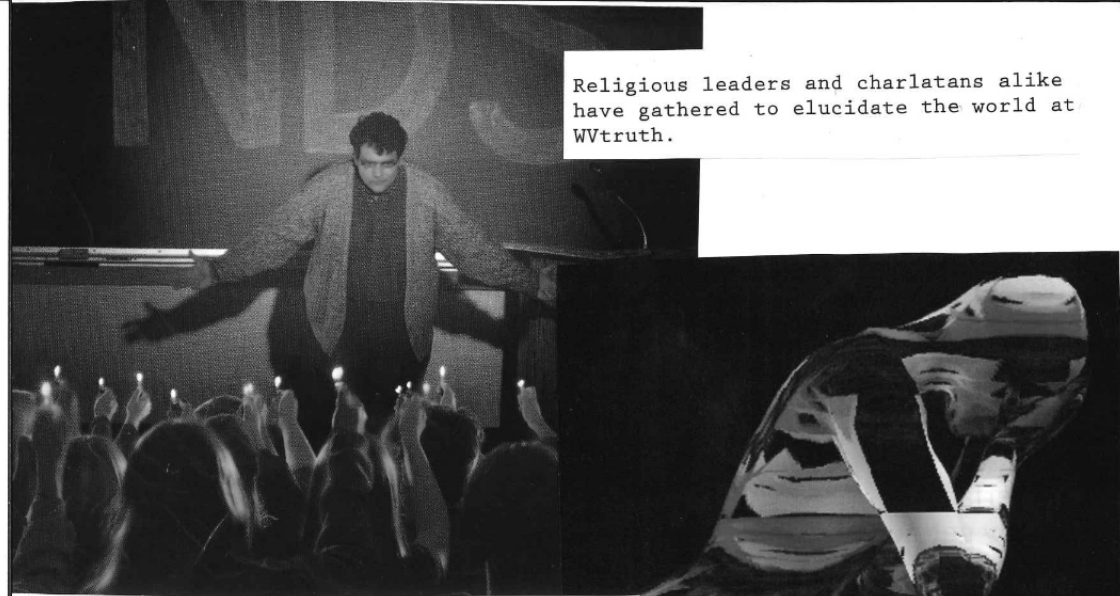
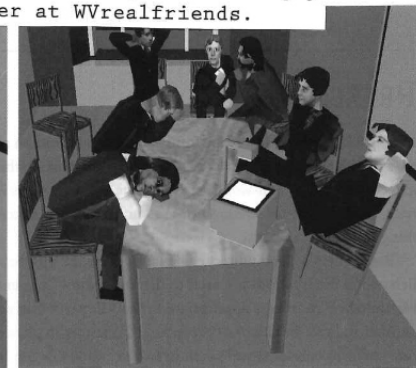
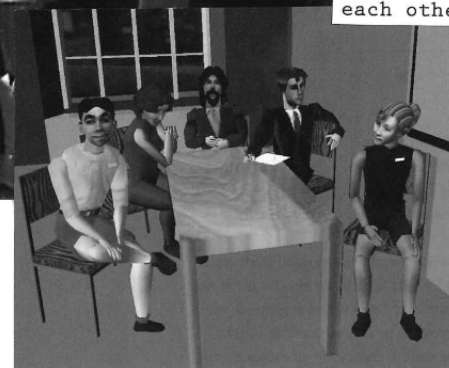
An adult consumer enjoys the content available at WVfunbags.



A USER (INSET) AND THE VIRTUAL VIETNAM SYSTEM (VIRTUALLY BETTER, INC., DECATUR, GA).

A glorious man relives his days of glory at WVpatriot.

Multiple users hang out and enjoy each other at WVrealfriends.

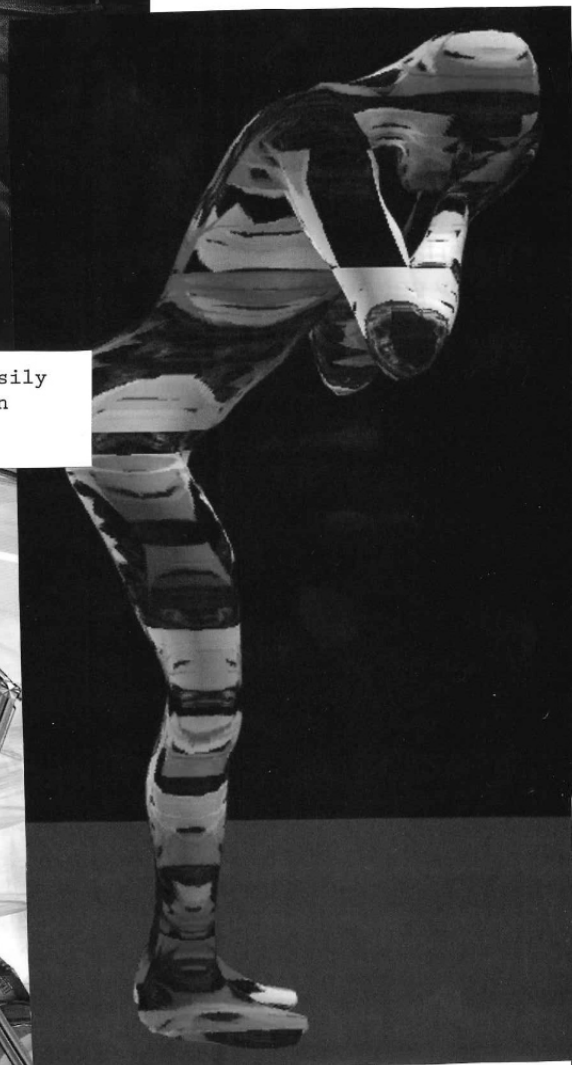


Religious leaders and charlatans alike have gathered to elucidate the world at WVtruth.

If you have emotions, you can easily share them with other patients on WVsad.



Kids can now be protected from anything by encouraging them to only play on WVfun.



PEOPLE find it easy to

BUILD WVplots®

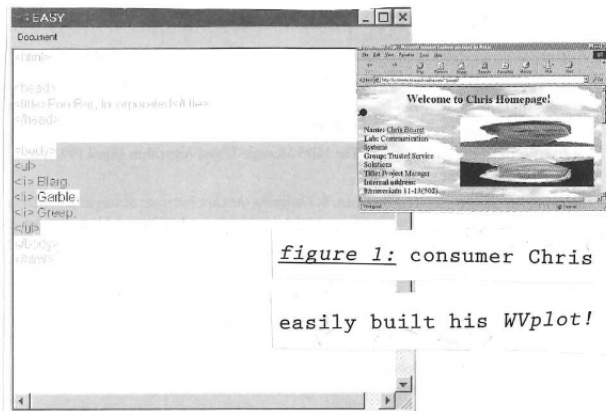
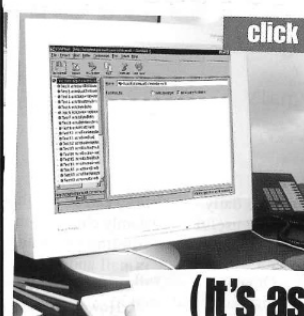
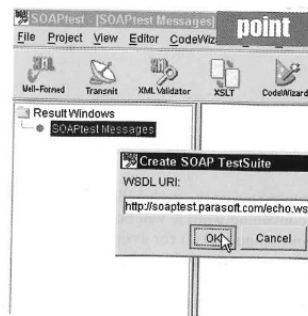
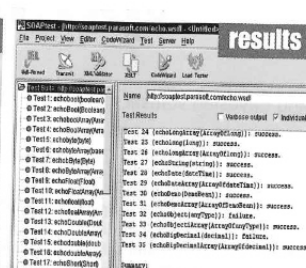


figure 1: consumer Chris
easily built his WVplot!



(It's as easy as 1-2-3.)



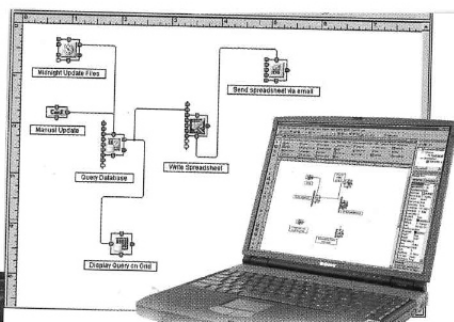
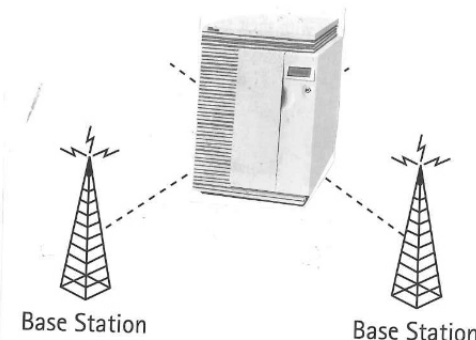
Before Visual Basic™ with SoftWIRE,
only programmers programmed.

DO YOU WANT TO PARTICIPATE IN YOUR EMOTIONAL WVorb@?

Purchasing a WVplot® and building on it is easier than it looks!

Follow 3 simple steps to build your own WVplot@!

1. purchase a your WVplot@ at your local WVplot-agency
2. acquire a proprietary WVplot@ building software
3. refer to the WVplot@ building software manual
4. allow others to skate to your WVplot@



Now anyone
can create programs!

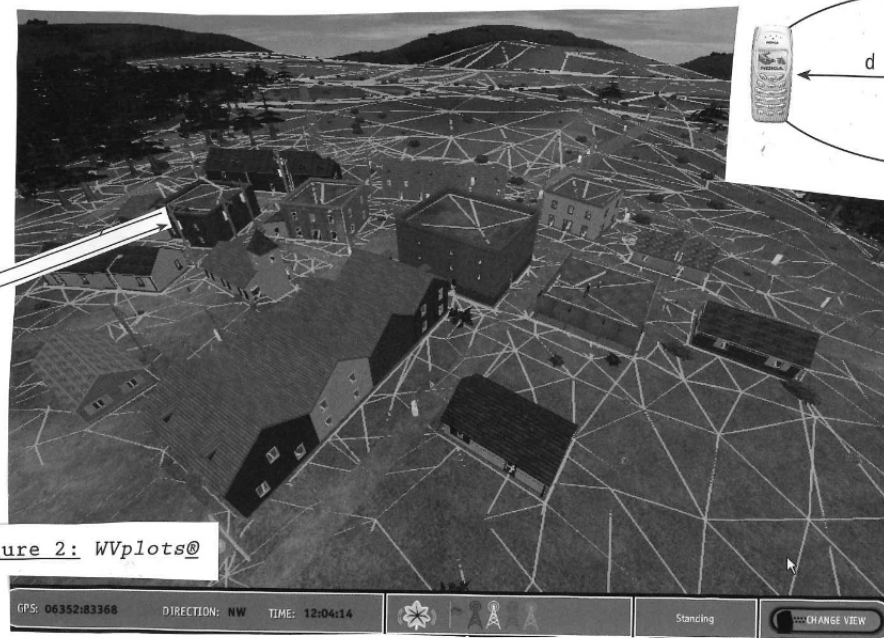
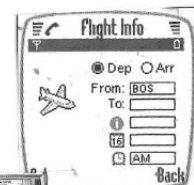
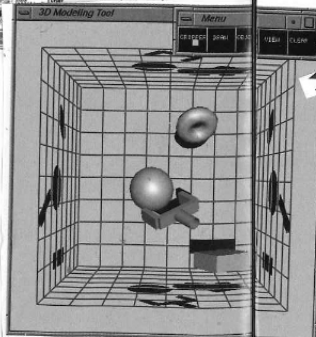
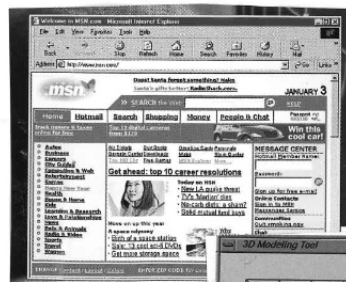


figure 2: WVplots@

FAQ

with Dr. Jubb Jubbard, Esq. Chief Communications Officer, *Regional Integration Systems, LLC*.

Is the WVmote® good value for my money?

Yes! the WVmote® facilitates the simplest, most direct connection to the WEAVE®. Thanks to its native orbblocking technology, developed by *Regional Integration Systems, LLC*, you can effectively plug and skate in a matter of minutes. Simply choose your orbblock during the setup of your WVmote®, and forget about ever changing it again. Now, you need an individual WVdevice® for each WVorb® you desire to access, and collect all of the different styling options *Regional Integration Systems, LLC* offers for purchase. Show off in style with your collection of WVmotes®, Now available in Satin Blue, Dawn Red and Hot Pink!

Can my kids skate the WEAVE®?

Yes! with WVmote® KIDz and WVdeck® KIDz, your children can safely skate the WEAVE in style. You can also install *Regional Integration Systems LLC's* proprietary child protection software for a very reasonable recurring purchase, and ensure that your children skate only WVplots® pre-approved by you (Only compatible with WVmote® KIDz and WVdeck® KIDz. Talk to your regional distributor about acquiring child protection software).

Will my WVplot® purchase run out?

Yes! For your own skate safety, all WVplots® are sold on a subscription basis, which ensures you will never encounter stale, unattended or abandoned content on the WEAVE. By ensuring that all our customers are continuously invested in their WVplots®, we are creating a safer, more connected society.

Should I be concerned about safety on the WEAVE®?

All WVdevices® come preloaded with extensive surveillance software that will keep you safe and guarded at all times. However, our partners at *Discovery Systems and Networks LLC* also market excellent protection software that you can purchase for a small recurring price to make your skate sessions on the WEAVE even more secure! (sold separately. Talk to your regional distributor about acquiring enhanced protection software from *Discovery Systems and Networks LLC*).

this guidebook is printed thanks to

OUR VALUED WVpartners®

If you are an experienced IT professional with a graduate degree and strong communication skills, you could be a part-time instructor at University of Phoenix **WEAVE®**. This prestigious position offers numerous rewards and benefits.

Keep Your
Current Job and
Teach **ON THE WEAVE®**

To see if you qualify, visit our website at:
www.uoponline.com/faculty.asp



University of Phoenix

ON THE WEAVE®

See our classified ad in the *Career Opportunities* section of this journal for more information!

WVspend:WVlearn:WVteach:WVphoenix

accredited by the Commission on Institutions of Higher Education on the Colleges and Schools (30 North LaSalle Street, Suite 2400, Chicago, Illinois)



Virtual Beings

FEELING LONELY??
Feel alone no more!

With a Virtual Being
at your side you will
never be lonely again!

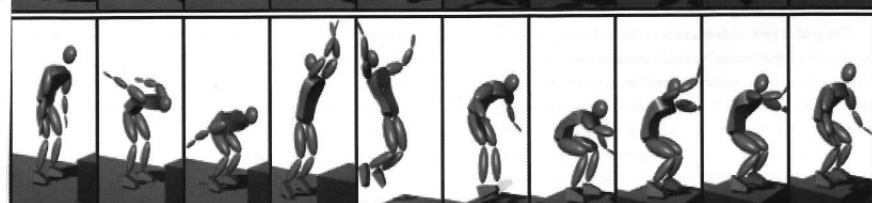
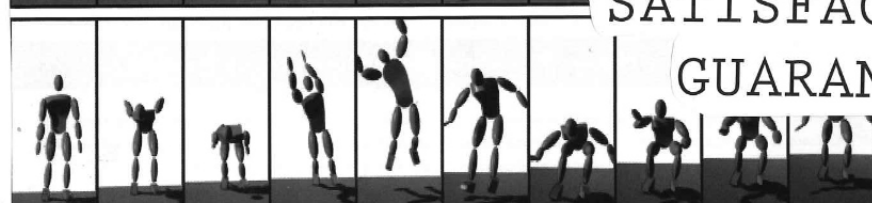
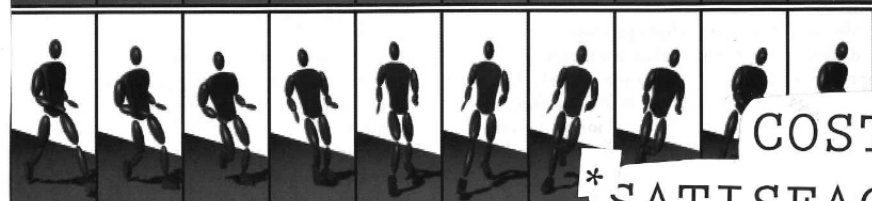
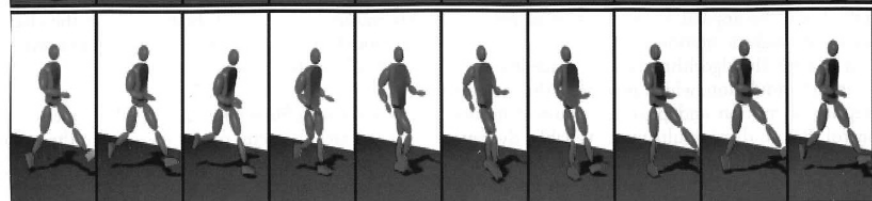
Duffy, the
merman,
in his
undersea
world



WVspend:WVservice:WVvritual:WVbeing

Back image: the utopia that will only be achieved through total adoption of the WEAVE.

do all this
and more
and more



COSTUME
*SATISFACTION
GUARANTEED

Be Seeing You!